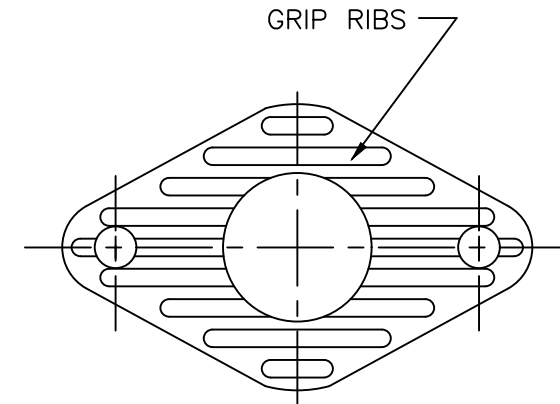
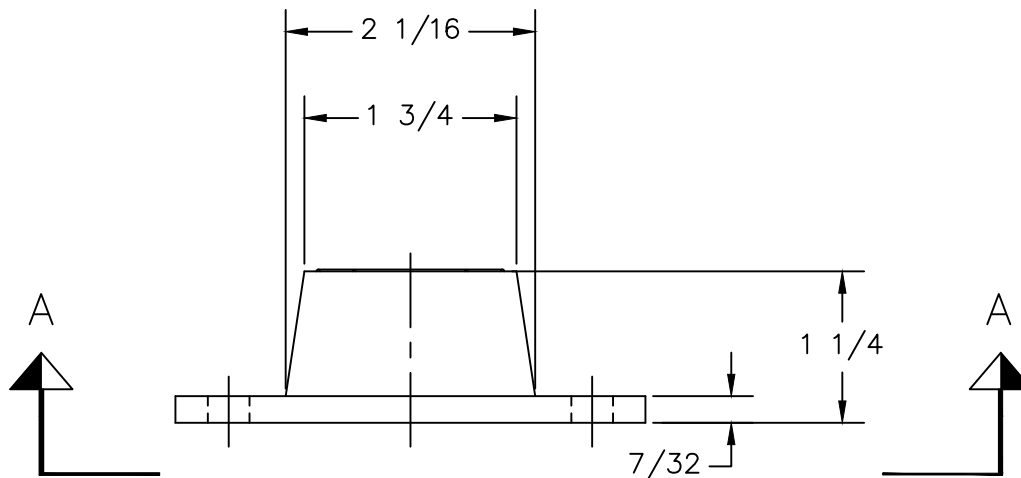


PART NUMBER	MODEL	RATED AXIAL LOAD (LBS)	DEFLECTION (IN)
114A-100309-01	R2-BLUE-WR	135	0.25
114A-100309-02	R2-BROWN-WR	170	0.25
114A-100309-03	R2-RED-WR	240	0.25
114A-100309-04	R2-GREEN-WR	380	0.25
114A-100309-05	R2-GRAY-WR	550	0.25
114A-100309-06	R2-PURPLE-WR	640	0.25



VIEW "A-A"



## NOTES:

1. ALL DIMENSIONS ARE NOMINAL IN INCHES. INTERPRET PER ANSI Y14.
2. MOLDED STEEL AND ELASTOMERIC ISOLATOR FOR NON FAIL SAFE, SERVICE CONDITIONS. CONTACT THE VMC GROUP FOR APPLICABILITY.
3. MODEL COLORS ARE ACTUAL MOUNT COLOR IN ADDITION TO MODEL TYPE STAMPING.
4. ADDITIONAL ELASTOMER TYPES & CAPACITIES AVAILABLE, CONTACT THE VMC GROUP FOR APPLICABILITY.

OTHER MATERIALS, COMPOUNDS, OR FINISHES WITH EQUAL OR SUPERIOR PROPERTIES MAY BE SUBSTITUTED AS THEY BECOME AVAILABLE.



## CERTIFIED FOR:

JOB NAME: \_\_\_\_\_  
 CUSTOMER: \_\_\_\_\_  
 CUSTOMER P.O.: \_\_\_\_\_  
 SALES ORDER: \_\_\_\_\_

MODEL R2 135-640 LBS.  
 DURULENE ELASTOMERIC ISOLATOR  
 0.25 INCH DEFLECTION



**VMC GROUP**  
 THE POWER OF TOGETHER

Bloomington, NJ 07403  
 Houston, TX 77041

SCALE:

NONE

SHEET:

1 OF 1

DRAWING NO.:

REVISION

